

**Abstract for the Polymer Networks Group Meeting 2010**  
**(Maximum Two Lines Title, Times 12pt, Bold, Single Space)**

(one blank line here, two if the title contains only one line)

W. Oppermann<sup>1</sup>, S. Seiffert<sup>2</sup>

<sup>1</sup> *Institute of Physical Chemistry, Clausthal University of Technology, Arnold-Sommerfeld-Str. 4, 38678 Clausthal-Zellerfeld, Germany*

<sup>2</sup> *Harvard University, Engineering Sciences Laboratory, 40 Oxford Street, Cambridge, MA 02138, USA*

Please follow these instructions when preparing abstracts for oral or poster contributions. Abstracts must not exceed **ONE PAGE**, which may include references and figures. It is composed of **two columns**, with 8 cm width each. The spacing between the columns is 1 cm. All margins (top, bottom, left, right) must be 2 cm. The font is "Times New Roman" (or equivalent). The font size for the title is 12 pt. The title is boldface and centered. The spacing between the lines is one (single spacing). Leave one blank line between the title and the centered name(s) of the author(s). Underline the Presenting Author's name. Her or his (their), affiliation(s) follow immediately below, and each on a separate line, with font size 10 pt. Leave two blank lines (10 pt) before starting the text. All other parts of the text are in 10 pt. The first line of each paragraph is indented by 0.5 cm.

Please adhere to these instructions as closely as possible and insert figures, tables, equations, and references as they appear in this template.

Tables and figures should be numbered in the order they appear in the text. Leave one blank line before a table and figure and after a table and a figure caption.

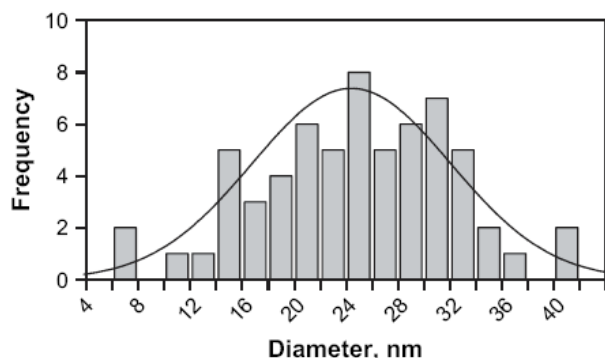


Figure 1 An exemplary figure from [1] illustrating the size of figures and their captions. Color will *not* be reproduced in the abstract booklet.

Equations should be numbered and typed in the appropriate place in the text. The character font and size of equations should be similar to that used for the text. The following equation is an example created using Word Equation Editor.

$$C(r,t) = C_0 - \sum_i \frac{M_i}{4\pi D_i(t+t_{0,i})} e^{-\frac{r^2}{4D_i(t+t_{0,i})}} \quad (1)$$

Table and figure captions are in 10 pt. The figures' width should not exceed the columns width (8 cm).

Symbols and legends should be large enough to be readable, the abstract booklet will be printed at 70 % (ISO A5 pages, 148 mm width, 210 mm height).

Table 1 A dummy table listing  $x$ ,  $y$ , and  $z$

$x$	$y$	$z$
1	4	-40
2	9	-1.8
3	25	-0.075

The list of references, if needed, is placed at the end of the text. The references should be numbered in order of text citation and abbreviated in the form used by the ACS [2].

This file should be saved under a logical name, e.g. "surname\_institution\_subject.doc", and submitted as both the Microsoft Word (Version 2002 compatible) .DOC-file and the corresponding PDF file, preferably with a single e-mail to

[submission@png2010.org](mailto:submission@png2010.org)

#### References

1. Seiffert, S.; Oppermann, W., *Polymer* **2008**, *49*, 4115 – 4126
2. Coghill, A.M.; Garson, L.R., *The ACS Style Guide*, Oxford University Press: Oxford, 2006